



Troubleshooting Guide

Before You Begin, Note the Following Steps:

1

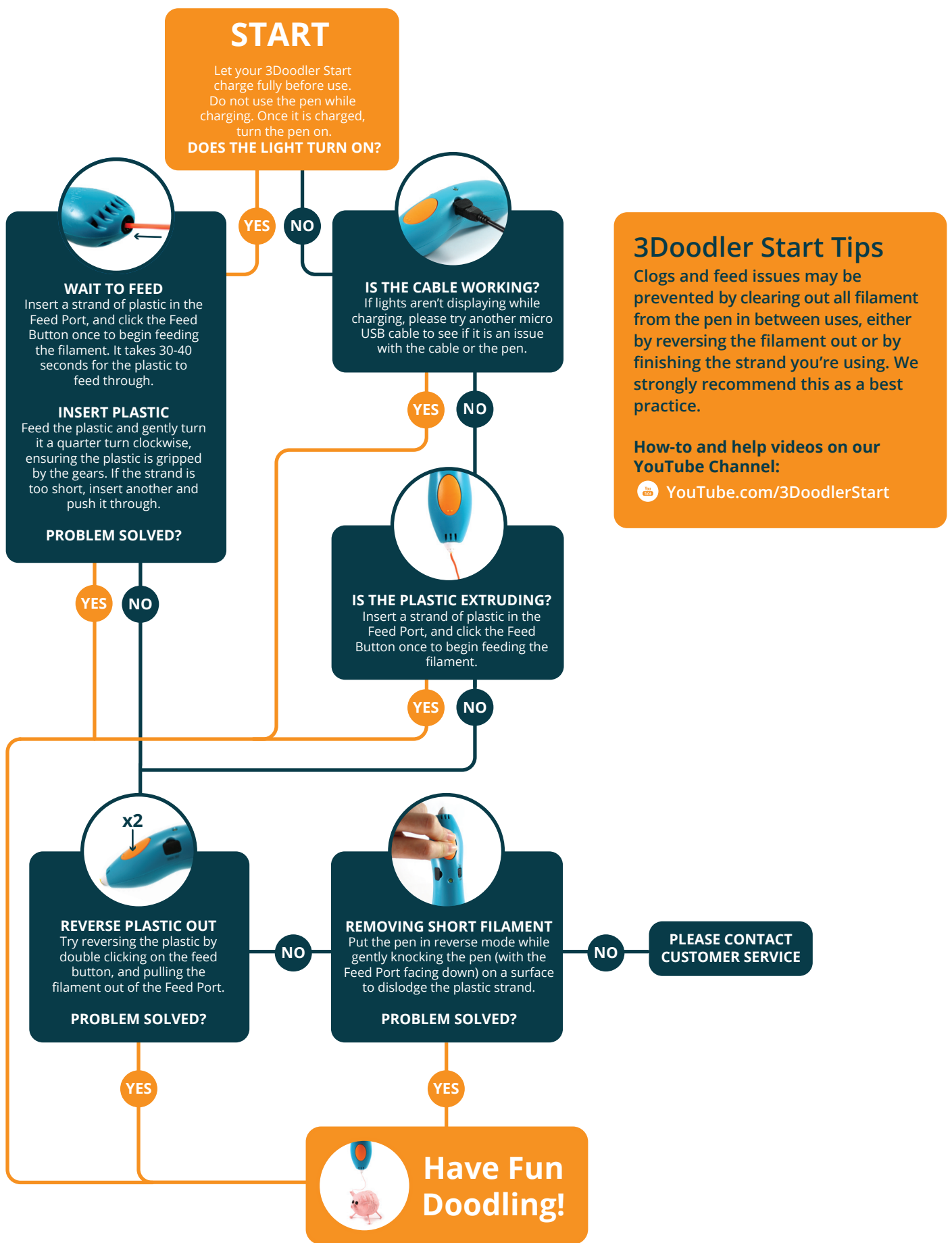
Begin by charging your 3Doodler Start to ensure the motor is able to run at full power. This will take 45 minutes to 2 hours. **Do not use the 3Doodler Start while charging.** The light will flash orange while charging, and will turn solid orange once it is fully charged.

2

Once you turn the pen on, and click the feed button, it takes 30-40 seconds for extrusion to begin after first inserting a plastic strand.

3

Push the plastic down the pen and gently twist it clockwise to get it to engage with the pen's gears. You will feel it lock into place.



LED Lights Cheat Sheet

| LED LIGHT COLOR | RED | GREEN | ORANGE |
|------------------|---------------------------------|----------------------|----------------------------|
| SOLID | Your pen is warming up | Pen is idle | Pen is fully charged |
| SLOWLY FLASHING | Please Contact Customer Service | Plastic is feeding | Your Pen is low on battery |
| QUICKLY FLASHING | Please Contact Customer Service | Plastic is reversing | Pen charging |

Still having issues?

✉ help@the3Doodler.com
☎ (US) 718.618.9904

Please have your serial number ready for us. You can find it printed on the bottom of your pen.



Troubleshooting Guide

Before You Begin, Note the Following Steps:

1

Begin by charging your 3Doodler Start to ensure the motor is able to run at full power. This will take 45 minutes to 2 hours. **Do not use the 3Doodler Start while charging.** The light will flash orange while charging, and will turn solid green once it is fully charged.


2

Once you turn the pen on, and click the feed button, it takes 30-40 seconds for extrusion to begin after first inserting a plastic strand.

3

Push the plastic down the pen and gently twist it clockwise to get it to engage with the pen's gears. You will feel it lock into place.

LED Lights Cheat Sheet

| LED LIGHT COLOR — LED LIGHT |  RED |  GREEN |  ORANGE |
|-----------------------------------|--|---|---|
| SOLID | Your pen is warming up | Pen is idle | Pen is fully charged |
| SLOWLY FLASHING | Please Contact Customer Service | Plastic is feeding | Your Pen is low on battery |
| QUICKLY FLASHING | Please Contact Customer Service | Plastic is reversing | Pen charging |